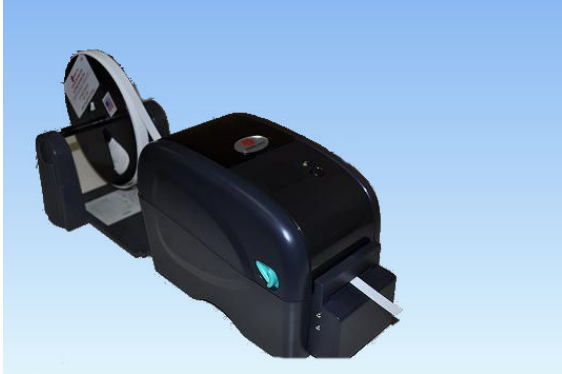


2:1 Continuous Flat Tubing Wire Marking System



| Size | Color | Part # |
|--------------|--------|--------------------|
| 1/8" x 100' | White | CFT(2X) 1/8-100-W |
| 1/8" x 200' | White | CFT(2X) 1/8-200-W |
| 1/8" x 100' | Yellow | CFT(2X) 1/8-100-Y |
| 1/8" x 200' | Yellow | CFT(2X) 1/8-200-Y |
| 3/16" x 100' | White | CFT(2X) 3/16-100-W |
| 3/16" x 200' | White | CFT(2X) 3/16-200-W |
| 3/16" x 100' | Yellow | CFT(2X) 3/16-100-Y |
| 3/16" x 200' | Yellow | CFT(2X) 3/16-200-Y |
| 1/4" x 100' | White | CFT(2X) 1/4-100-W |
| 1/4" x 200' | White | CFT(2X) 1/4-200-W |
| 1/4" x 100' | Yellow | CFT(2X) 1/4-100-Y |
| 1/4" x 200' | Yellow | CFT(2X) 1/4-200-Y |
| 3/8" x 100' | White | CFT(2X) 3/8-100-W |
| 3/8" x 200' | White | CFT(2X) 3/8-200-W |
| 3/8" x 100' | Yellow | CFT(2X) 3/8-100-Y |
| 3/8" x 200' | Yellow | CFT(2X) 3/8-200-Y |
| 1/2" x 100' | White | CFT(2X) 1/2-100-W |
| 1/2" x 200' | White | CFT(2X) 1/2-200-W |
| 1/2" x 100' | Yellow | CFT(2X) 1/2-100-Y |
| 1/2" x 200' | Yellow | CFT(2X) 1/2-200-Y |
| 3/4" x 100' | White | CFT(2X) 3/4-100-W |
| 3/4" x 200' | White | CFT(2X) 3/4-200-W |
| 3/4" x 100' | Yellow | CFT(2X) 3/4-100-Y |
| 3/4" x 200' | Yellow | CFT(2X) 3/4-200-Y |

Also available in 3:1 Shrink Ratio (3X)

The product is manufactured from cross-linked polyolefin, a flame retardant material that will tolerate exposure to temperatures up to 135°C. The tubing conforms to AMS-DTL 23053/5, Class 1 & 3 material and functional requirements. Furthermore, they are resistant to common fluids, lubricants and solvents. Once printed, the tubing is ready for installation without any additional treatment.

Printers & Accessories:
 AWMS-225c Thermal Printer
 18106093 Black Thermal Ribbon
 2559300 Tubing Reel Holder