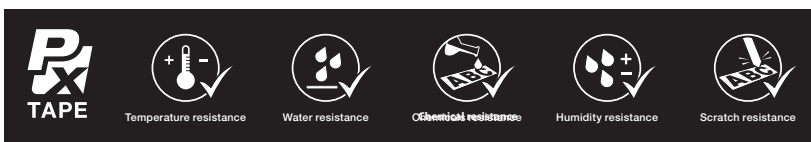




Professionals prefer LABELWORKS PX and the LW-PX750 – a portable label and barcode printer with exclusive time- and cost-saving features for creating custom and compliant labels up to 1" (24mm) wide. Organize tool cribs, identify storage bins, make safety labels, tag assets and more. With application-specific hot keys, this easy-to-use label maker offers extraordinary flexibility, import images and print on the go – the LW-PX750 features Mixed-Length printing for variable-length labels on a single, half-cut strip and Pick-and-Print for faster print-and-apply in the field. With LABELWORKS PX innovative rollback technology, there's less lead margin waste.



MADE FOR INDUSTRY

FASTER

QWERTY keyboard and application hot keys make label creation fast and intuitive.

SMARTER

Designed with innovative features such as "Mixed-Length" labels and image import for better visual identification.

EASIER & BETTER

Pick-and-Print option prints and holds labels, plus less wasted tape per print lowers operating costs, and the PeelGuard trimmer extends label life.

LABELWORKS PX LW-PX750

Designed for the demands of industrial labeling in a variety of environments, the LW-PX750 is able to satisfy a wide array of applications through a diverse range of supplies and is supported with an unmatched lifetime warranty.



FASTER

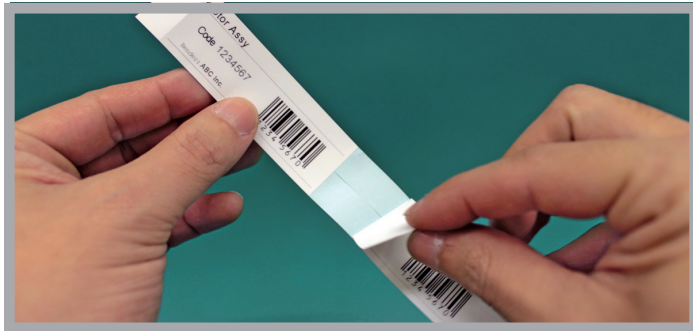
The large QWERTY keyboard makes data entry as intuitive as typing on a computer. Plus, the LW-PX750 can print labels up to 30 mm per second.

Pre-formatted hot keys for barcodes, asset management, mixed-length half-cut label strips and general identification.



SMARTER

The automatic half-cut and Mixed-Length feature allow users to print various length labels all on a single, half-cut strip of labels, which eliminates time-wasting “type, print, delete...repeat” when printing multiple labels at one time.



EASIER

Use the PeelGuard trimmer to round corners, and extend the life of your label. A 4 mm lead margin and half-cut significantly reduce labeling costs and wasted tape. The Pick-and-Print feature allows users to queue a series of labels that the printer will print, cut, and then hold until removed. Upon removing the label, the next label in the series will automatically print, and the process repeats until the print job is completed.

PeelGuard

With PeelGuard®

Without PeelGuard®

Margins

4 mm lead*
and 1mm margins

Pick & Print

- Print
- Cut
- Hold

• “Pick” Label

BETTER

Transfer images and logos from Label Editor Professional software and store them on the LW-PX750 to add to labels when printing remotely or when connected to a PC.



VARIETY OF SUPPLIES

LABELWORKS PX supplies offer a diverse range of industrial materials, colors and sizes to meet practically any need including exclusive magnetic tape and super strong industrial adhesive. With PX tape, you get a durable, low-cost solution for your ID needs.

Magnet Tape

OPERATOR		TASK ASSIGNMENT TABLE			
AREA	TASK A	NPS	TASK B	NPS	
Christopher	B-05	#16255 1.0	#37142	3.5	
Sebastian	D-01	#21372 3.5	#37142	0.5	
Benjamin	A-12	#37142 2.0	#37142	2.0	

Industrial Tape

Super Strong

Tape Width

Asset Management

Asset No.	659842654832
Asset Name	Projector
Date	11/12/2014
Dept.	Planning Dept.

SPECIFICATIONS

LABELWORKS PX LW-PX750

EPSON
EXCEED YOUR VISION

LW-PX750

SOLD BY K-sun Corporation

Manufacturer	EPSON	EPSON
Printer	LW-PX750 Lite kit	LW-PX750 Full kit
SKU	LW-PX750	LW-PX750PCD



Price(MSRP) ex VAT	\$239	\$299
Tape Width	4 - 24 mm	4 - 24 mm
Max HST width	14 mm (214ST)	14 mm (214ST)
Printer head width	18.1 mm	18.1 mm
Printing resolution (dpi)	180 dpi	180 dpi
Max Print Speed	30 mm/sec	30 mm/sec
Cutter	AUTO/Half	AUTO/Half
Backlight	Yes	Yes
Pick and Print (Drop stop)	Yes	Yes
Mix Length	Yes	Yes
Tape End Detection	Yes	Yes
Tape Type Detection	Yes	Yes
Auto Tape Rewind (For shortening label margin)	Yes	Yes
Rechargeable Battery	No	No
Power Supply	6AA/AC adaptor	6AA/AC adaptor
Interface	USB	USB
Support OS	Windows	Windows

Package includes	<ul style="list-style-type: none"> •LW-PX750 printer •AC adapter •212BWPX tape •Manual 	<ul style="list-style-type: none"> •LW-PX750 printer •Semi-Rigid Hardcase •AC adapter •USB cable •Software CD (Label Editor Pro) •212BWPX tape •Manual
------------------	--	---

Language of Manual	EN, FR, SP	EN, FR, SP
Wi-Fi / Bluetooth	No	No

Accessories	<ul style="list-style-type: none"> • AC Adapter •Semi-Rigid Case •USB Cable 	<ul style="list-style-type: none"> • AC Adapter •Semi-Rigid Case •USB Cable
-------------	--	--

LW-PX750PCD "Full Kit"



LW-PX750 "Lite Kit"



LW-PX750PCD "Full Kit"

- **LW-PX750 Printer**
- **AC Adapter**
- **USB Cable**
- **212BWPX Tape Cartridge**
- **Label Editor Professional Software**
- **Owners Manual**
- **Semi-Rigid Carrying Case**

© 2017 Epson LABELWORKS PX. All Rights Reserved. Reproduction in part or in whole, without the written permission from Epson, is strictly prohibited. EPSON and EXCEED YOUR VISION are registered trademarks of Seiko Epson Corporation. All other products names and other company names used herein are for identification purposes only and are the trademarks or registered trademarks of their respective owners. Epson disclaims any and all rights in those marks. Print samples shown are simulations only. Specifications and product availability are subject to change without notice and may vary between countries. Please check with local Epson offices for more information.

Apple, iPad and iPhone are trademarks of Apple Inc., registered in the U.S. and other countries. App Store is a service mark of Apple Inc.

Android is a trademark of Google Inc.

Dealer's Stamp

impact, inc.
877.549.7600
www.impactwiremarking.com

Information correct as of July 2017