



[www.impactwiremarking.com](http://www.impactwiremarking.com)

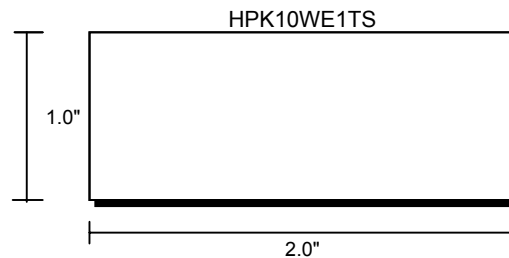
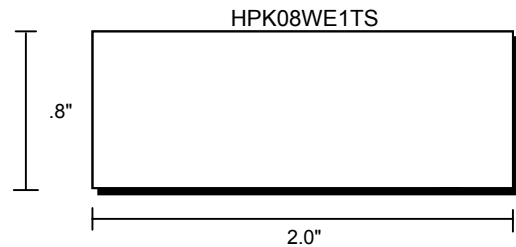
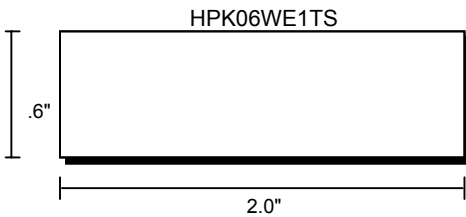
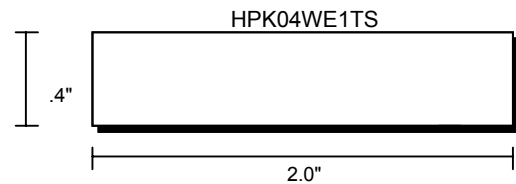
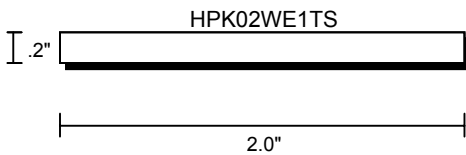
## HPK ADHESIVE PANEL LABELS

### APPLICATIONS

Impact, Inc.'s Panel Labels are pressure sensitive adhesive backed labels used to permanently identify control panel components and racks. Impact, Inc.'s Panel Labels will adhere to most smooth surfaces including bare and painted metal.

### USE

- Place HPK Panel Labels in a thermal transfer printer
- Use AWMS software, then print product
- No need to permatize
- Remove from the carrier sheet
- Press firmly onto clean surface



### PRODUCT

- Manufactured from polypropylene film with white topcoat and permanent pressure sensitive acrylic adhesive
- Operates at temperatures from -20°F to 176°F (-29°C to 80°C)
- No permatizing required
- Resistant to common fluids, lubricants and solvents

### FORMAT

The unique presentation - markers mounted on continuous carrier - enables the user to produce high quality markers in their own production shop or jobsite using the affordable Advanced Wire Marking System software and printers.

**DESCRIPTION:** Impact, Inc's "HPK" Panel Labels are top coated thermal transfer printable white polypropylene film coated with a permanent pressure sensitive acrylic adhesive and backed with a 50lb semi bleached Kraft release liner.

**PRINT METHOD:** Thermal Transfer

**ADHESIVE:** Permanent acrylic

**COLOR:** White

**EXPECTED EXTERIOR LIFE:** Indoor use only

**SERVICE TEMPERATURE:** -20°F to 176°F (-29°C to 80°C)

**MINIMUM APPLICATION TEMPERATURE:** 50°F (10°C)

**STORAGE:** Two years when stored at 70°F (21°C) and 50% RH

"HPK" PROPERTY	TEST METHOD	TEST PERFORMANCE
Thickness	ASTM D 3652-83	<b>Film:</b> 6.0 mil (152 micron) ±10% <b>Adhesive:</b> 1.1-1.2mil (29-30 micron) ±10%
Dimensional Stability	On Al panel at 160°F (70°C) for 24 hours	MD: 0.50 TD: 0.50

ADHESION FROM	AVERAGE		EXPECTED RANGE		TEST METHOD
	Oz/in	N/m	Oz/in	N/m	
Stainless Steel	64	704	50-75	550-825	PSTC 1 Modified for 72 hours dwell time
Acrylic	58	638	45-70	495-770	PSTC 1 Modified for 72 hours dwell time
Glass	62	682	50-75	550-825	PSTC 1 Modified for 72 hours dwell time

Expected Shear	20				PSTC 7 (1 hour dwell, 1sq. in., 4 lb. Load)
Tack (gm/sq cm)	290		150-450		ASTM D 2979-89

Doc. No.: TDS-PSA-00041  
May 1999

**WARRANTY** Impact, Inc. recommends that a selected label type be thoroughly tested to insure it meets all end user requirements. Impact, Inc. warrants only the purchaser that its products are free from defects in material and workmanship. Impact, Inc. limits its obligation under this warranty and at its option to repair or replace the product. This warranty is in lieu of any other warranty, expressed or implied, including, but not limited to, any implied warranty of merchantability or fitness for a particular purpose. Impact, Inc. is not liable for any damages, including lost profits, lost savings or other incidental or consequential damages arising out of the use of or inability to use such products.