

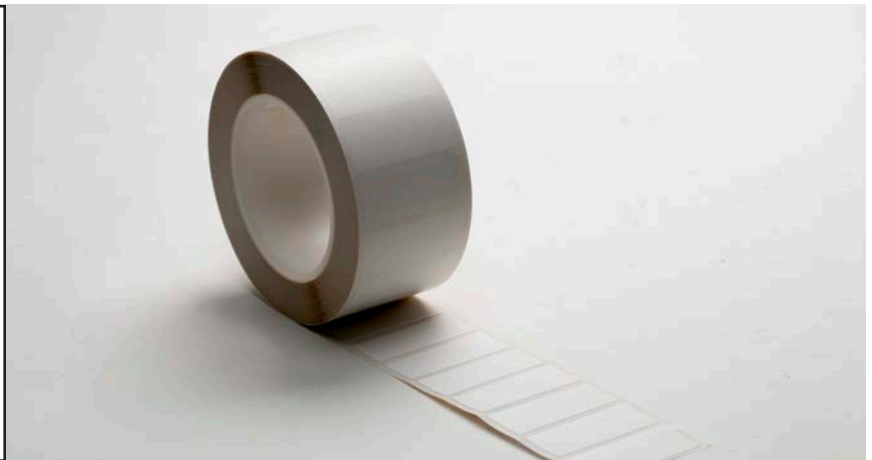


# HPK PANEL LABELS

HPK Panel Labels are manufactured from polypropylene film with white topcoat and backed with pressure sensitive acrylic adhesive. They are used to permanently identify control panel components and racks. These labels will adhere to most smooth surfaces including bare and painted metal. These labels are resistant to common fluids, lubricants, and solvents. HPK Panel Labels are compatible with the AWMS-245 Plus thermal transfer printer.

## **FEATURES**

- Indoor use only
- Great for identifying panels and racks
- Best for smooth surfaces
- Compatible with the AWMS-245 Plus printer



Product Code	Part Number	Height	Width
915	HPK02WE1TS	0.2 in.	2.0 in.
916	HPK04WE1TS	0.4 in.	2.0 in.
917	HPK06WE1TS	0.6 in.	2.0 in.
918	HPK08WE1TS	0.8 in.	2.0 in.
919	HPK10WE1TS	1.0 in.	2.0 in.

## **MATERIAL**

- Polypropylene with pressure sensitive acrylic adhesive

## **PRINT METHOD**

- Thermal Transfer

## **SERVICE TEMP RANGE**

- -20°F to 176°F



# HPK PANEL LABELS

## Technical Data

Property	Test Method	Test Performance
Thickness	ASTM D 3652-83	Film: 6.0 mil (152 micron) +/- 10% Adhesive: 1.1-1.2mil (29-30 micron) +/- 10%
Dimensional	On Al panel at 160°F for 24 hours	MD: 0.50 TD: 0.50

Adhesion From	Average (oz/in)	Expected Range (oz/in)	Test Method
Stainless Steel	64	50-75	PSTC 1 Modified for 72 hours dwell time
Acrylic	58	45-70	PSTC 1 Modified for 72 hours dwell time
Glass	62	50-75	PSTC 1 Modified for 72 hours dwell time

	Average (oz/in)	Expected Range (oz/in)	Test Method
Expected Shear	20		PSTC 7 (1 hour dwell, 1sq. in., 4 lb. Load)
Tack (gm/sq cm)	290	150-450	ASTM D 2979-89



## CONTACT US

---

**Tel. 425.656.0330**

**Fax 425.656.0440**

**[sales@impactwiremarking.com](mailto:sales@impactwiremarking.com)**

**[www.impactwiremarking.com](http://www.impactwiremarking.com)**

**P.O. Box 88068 Seattle, WA 98138**

This information and data is believed to be accurate and reliable. Although the information and recommendations set forth herein are presented in good faith and believed to be correct as of this date, Impact, Inc. makes no representations as to the completeness or accuracy thereof. We place at your disposal the technical information necessary for the correct use of our products. As conditions and methods of use are beyond our control, that the person receiving the same will make their own determination as to the suitability for their purpose. We reserve the right to modify characteristics with the aim of improving the product and adapting it to the requirements of the market.

We are not affiliated or endorsed by Impact Label Corporation (800.820.0362)